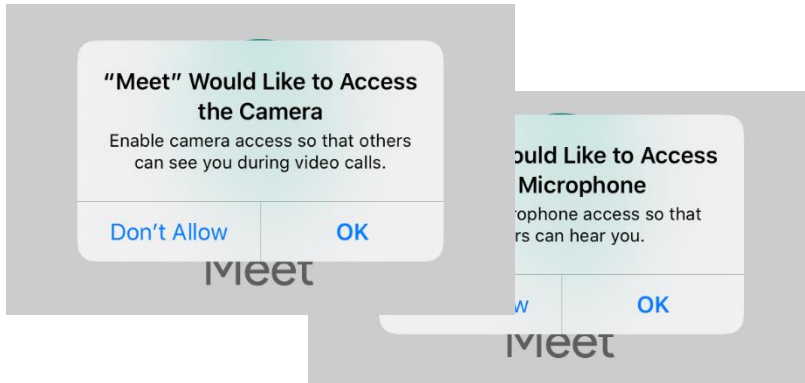


Sidmouth College Google Meet Login Guide

- Download and open the Google **Meet** app.
- Choose the access you would like to give the app via the popup messages:



Meet

Sign in

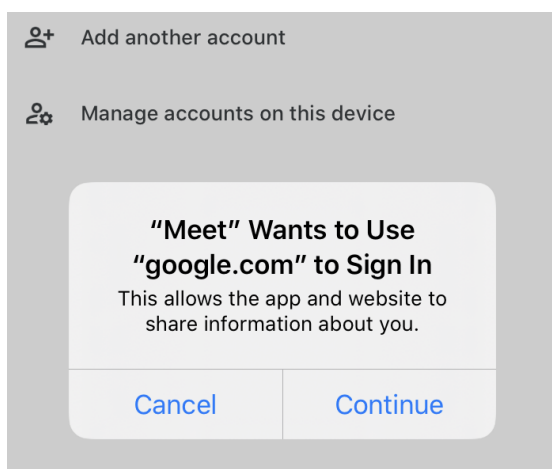
- If your Sidmouth College account is not listed tap on Add another account:

✕ Choose an Account

👤+ Add another account

👤⚙️ Manage accounts on this device

- Sign in with your Sidmouth College e-mail address and password in the proceeding Google login:



Google

Sign in

Use your Google Account. You'll also sign in to Google services in your apps & Safari.

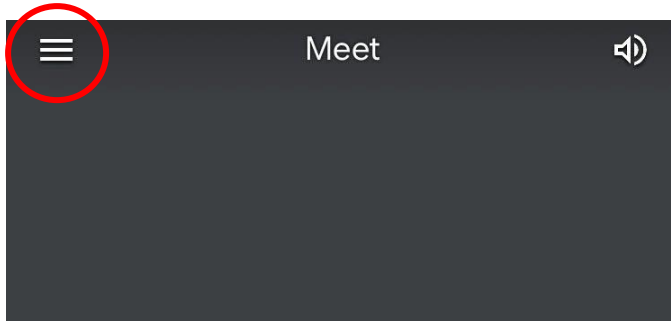
Email or phone

Forgot email? Enter your password

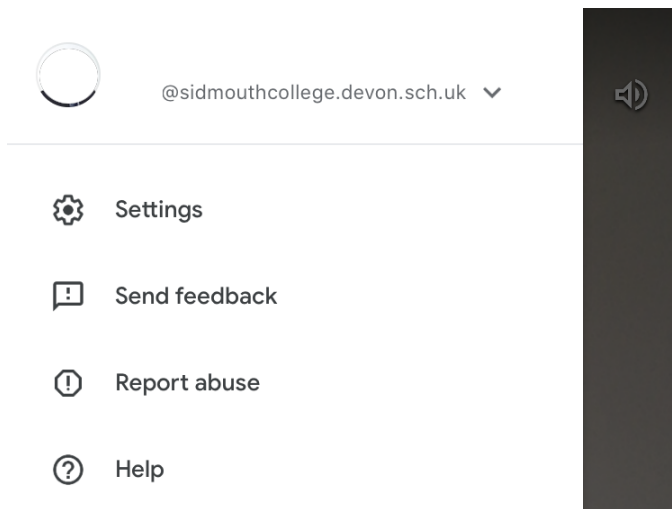
[Forgot password?](#)

Next


- If you already have Meet installed and logged in to a personal Google account you can change this via the three lines icon at the top left:



- Tap on the account at the top left of the menu:



- You will then have the option of **Add another account**.

 Add another account

- Sign in with your **Sidmouth College e-mail address** and password as above.